



Beaufort County Public Works Stormwater Infrastructure Project Summary

Project Summary: Sea Island Parkway Outfall

Activity: Preventive Maintenance

Narrative Description of Project:

Repaired washout. Installed rip rap for erosion.

Completion: Jan-13

| 2013-582 / Sea Island Parkway Outfall | Labor Hours | Labor Cost | Equipment Cost | Material Cost | Contractor Cost | Indirect Labor | Total Cost |
|--|-------------|-----------------|-----------------|-----------------|-----------------|-----------------|-------------------|
| AUDIT / Audit Project | 0.5 | \$10.45 | \$0.00 | \$0.00 | \$0.00 | \$6.62 | \$17.06 |
| HAUL / Hauling | 7.5 | \$163.88 | \$80.25 | \$247.42 | \$0.00 | \$97.10 | \$588.65 |
| RPWO / Repaired Washout | 17.0 | \$402.07 | \$88.28 | \$140.51 | \$0.00 | \$263.00 | \$893.86 |
| 2013-582 / Sea Island Parkway Outfall Sub Total | 25.0 | \$576.39 | \$168.53 | \$387.94 | \$0.00 | \$366.72 | \$1,499.57 |
| | | | | | | | |
| Grand Total | 25.0 | \$576.39 | \$168.53 | \$387.94 | \$0.00 | \$366.72 | \$1,499.57 |

Before



During



After



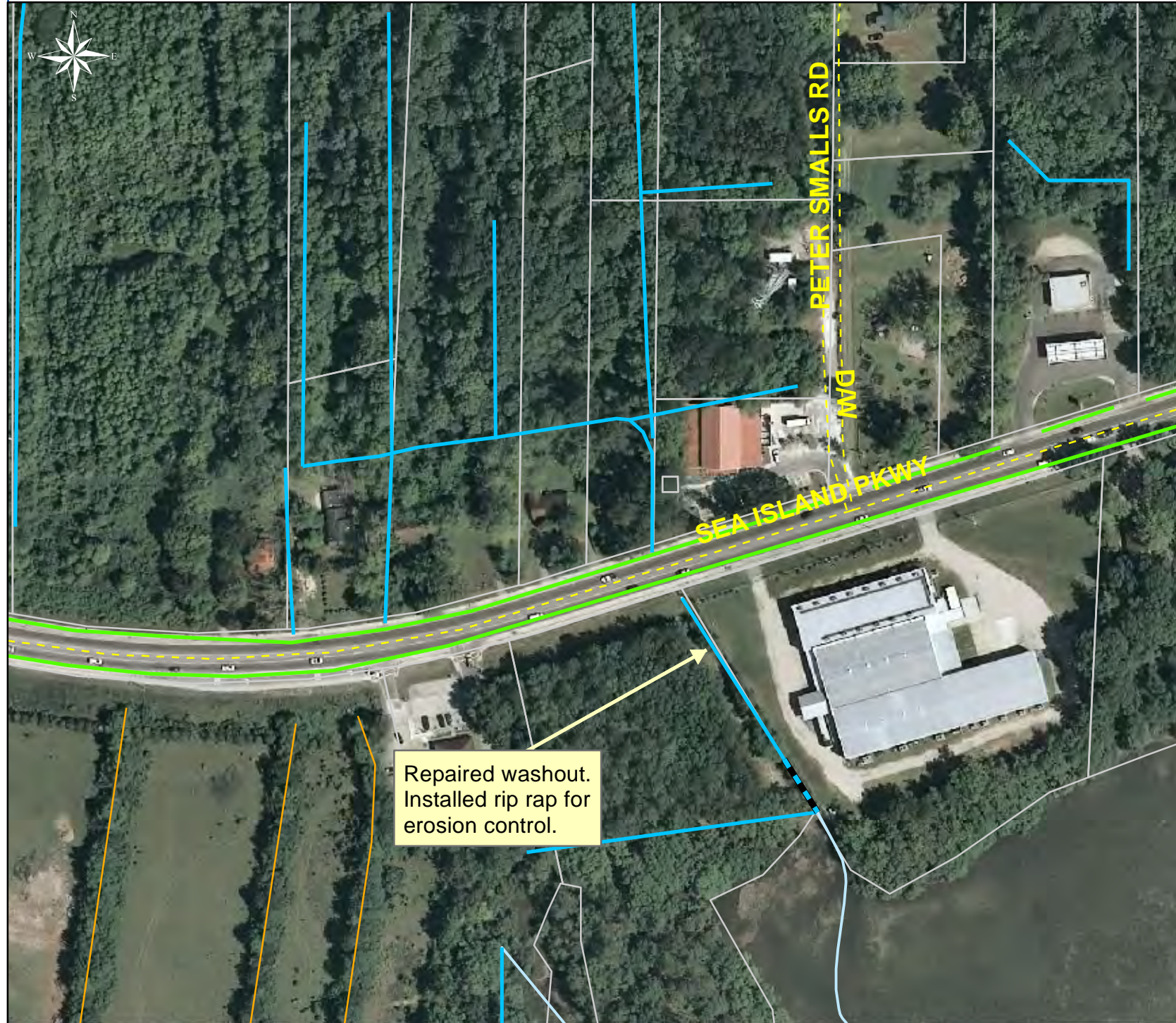
Project: Sea Island Parkway

Activity: Preventive Maintenance

Project #: 2013-582

Township: St. Helena Island

Completed: January 2013



Legend

TYPE

| | |
|--|------------------------|
| | River |
| | Creek/Stream |
| | River/Creek/Marsh BANK |
| | Channel (fka Outfall) |
| | Channel Pipe |
| | Lateral |
| | Lateral Pipe |
| | Roadside |
| | Roadside Pipe |
| | Road Pipe |
| | Crossline Pipe |
| | Driveway Pipe |
| | Access Pipe |
| | Bleeder Pipe |
| | Parcels |



1 inch = 177 feet